

Global Resource Products Inc.

Pipe and Flange Protection Caps and Plugs



Global Resource Products carries a wide range of different style pipe thread protectors..high heat paint resistant thread protectors, open-end pipe protectors, closed-end pipe protectors and flange discs designed to protect pipe ends from rust and contaminants and coverage during painting and other processes.

Global Resource Products, Inc. 3419 Westminster #204 Dallas, Texas 75205

Phone: 817-304-3378

Email: grpi@hughes.net

Website: www.globalresourceproducts.com

Webstore: www.globalresourceproducts.net

GRPI-Pro-Tector



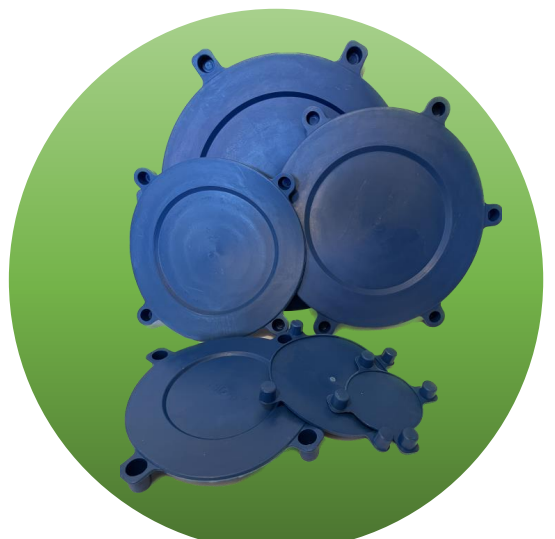
**HIGH HEAT PAINT RESISTANT THREAD
PROTECTORS (Pages 4-20)**



**OPEN END
PIPE END PROTECTION (Page 21)**



**CLOSED END
PIPE END PROTECTION (Page 22)**



**FLANGE DISCS
PIPE END PROTECTION (Page 23-24)**



**OTHER MODELS
PIPE-VALVE
END PROTECTION
(Page 25-32)**

Global Resource Products Inc.

Pipe and Flange Protection Caps and Plugs

	Page
High Heat Paint Resistant Thread Protectors	4
Groove Bands	5
Pull-Fit Tabbed Plugs	6
...2.5" Tabbed Plug (RPI-1978-D)	7
...3" Tabbed Plug (RPI-1978-B)	8
...4" Tabbed Fitting Plug (RPI-3016)	9
...4" Tabbed Coupling Plug (RPI-2935-1)	10
...4" Tabbed Plug (RPI-2935-2)	11
Push Fit Collared Plugs	12
...1" Collared Plug (RPI-1978-F)	13
...1" Collared Plug Feathered (RPI-1978-I)	14
...2" Collared Plug Feathered (RPI-1978-CF)	15
...3" Collared Plug (RPI-1978-G)	16
...3.5" Collared Coupling Plug (RPI-3052)	17
...4" Collared Plug (RPI-1978-H)	18
...4" Collared Coupling Plug (RPI-2977)	19
Zap-Lock Plug Protectors	20
Open-End Thread Protectors	21
Closed End Pipe Thread Protectors	22
Flange Gasket Protectors	23-24
Other Models Pipe-Valve End Protection	25
QMG-230 PE Gas Pipe Plugs	26
QMG-280 Pipe End Plug	26
QMG-290 Pipe End Plug	26
QMG-330 Z11 Threaded End Cover	27
QMG-350 Z61 Socket Weld End Cover	27
QMG-530 GB Stud Hole Fitting Flange Protectors	27
QMG-535 High-Face Stud Hole Fitting Flange Protectors	28
OMG-577 JIS Stud Hole Fitting Flange Protectors	28
QMG-580 Hollow Stud Hole Fitting Flange Protectors	29
QMG-610 ANSI Outside Fitting Flange Protectors	29
QMG-611 ANSI Outside Fitting Flange Protectors	29
QMG-620 DIN Outside Fitting Flange Protectors	30
QMG-622 DIN Outside Fitting Flange Protectors	30
QMG-630 Valve Flange Face Protection Plugs	30
QMG-635 Flange Pipeline Protection Plugs	31
QMG-660 Push-In Full-Face Flange Protectors	31
QMG-685 Inner Ribs Flange Protector	32
QMG-770 Recessed Pipe Caps for Pipe Ends	32



GRPI-Pro-Tector

Pipe High Temperature Silicone Plugs and Groove Bands Protect Threads During Coating Processes...paint-baking, electroplating, powder coating, chrome plating, shot blasting...Ease of Installation, Eliminates masking with high temperature tape...Cost effective...Saves time and money...Reusable...Process More Products Per Day.

Our Pro-tectors are produced from a specially formulated paint-resistant Silicone with a temperature range up to 450F. The raw material is formulated with antioxidant chemicals. The Paint-Resistant Silicone gives a higher strength and tougher Pro-tector eliminating tearing. After use, a simple twist of the part will cause the paint to pop off the Pro-tector allowing repeated reuse.

STYLES



Groove Bands
(Page 4)



Tabbed Plugs
(Pull Fit)
(Pages 6-11)



Collared Plugs
(Push Fit)
(Pages 12-19)



GROOVE BANDS

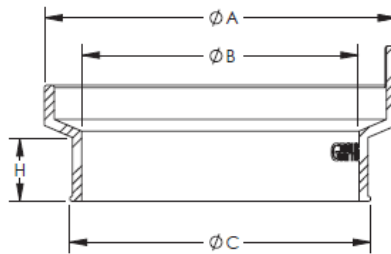
Groove Bands protect outer threads during paint-baking, electroplating, powder coating, chrome plating and shot blasting. The tab allows for quick removal. Made from high temperature paint-resistant silicone these groove bands work in temperatures as high as 450F. Paint pops off with a twist of the band allowing for repeated use.

P/N	ID	THICKNESS	Color	Designation
RPI-1978-A1	2.00"	.305"	Green	2" DN50
RPI-1978-A2	3.20"	.305"	Red	3" DN50
RPI-1978-A3	4.00"	.305"	Yellow	4" DN50
RPI-1978-A4	6.25"	.305"	Blue	6" DN50



PULL-FIT TABBED PLUGS

Tabbed Plugs protect inner threads during paint-baking, electroplating, powder coating, chrome plating and shot blasting. The Pull-Fit tab allows for quick removal. Made from high temperature paint-resistant silicone these tabbed plugs work in temperatures as high as 450F. Paint pops off with a twist of the plug allowing for repeated use.



P/N	SIZE	A UPPER OUTSIDE DIAMETER	B UPPER INSIDE DIAMETER	C LOWER OUTSIDE DIAMETER	H THREAD COVERAGE
RPI-1978-D	2.5"	2.80"	2.554"	2.25"	0.80"
RPI-1978-B	3"	3.18"	2.934"	2.90"	0.52"
RPI-3016	4"	5.026"	4.25"	4.306"	0.314"
RPI-2935-1	4"	4.50"	4.25"	3.85"	0.814"
RPI-2935-2	4"	5.026"	4.25"	4.38"	1.50"

Free Sample Available on Request Call or email for quote
 817-304-3378 grpi@hughes.net

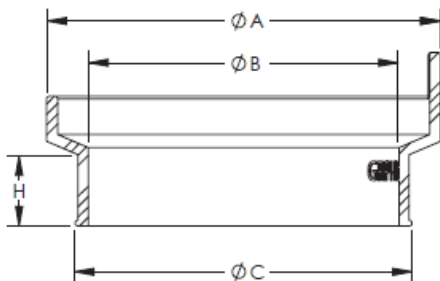
PULL-FIT TABBED PLUG

P/N RPI-1978-D

2.5" TABBED PLUG



RPI-1978-D 2.5" Tabbed Plugs protect inner threads on 2.5" Pipe during paint-baking, electroplating, powder coating, chrome plating and shot blasting. The Pull-Fit tab allows for quick removal. Made from high temperature paint-resistant silicone these tabbed plugs work in temperatures as high as 450F. Paint pops off with a twist of the plug allowing for repeated use.



Dimensional Data

A – Upper Outside Diameter	2.80"
B – Upper Inside Diameter	2.554"
C – Lower Outside Diameter	2.25"
H – Thread Coverage	0.80"

Free Sample Available on Request

817-304-3378

Call or email for quote

grpi@hughes.net

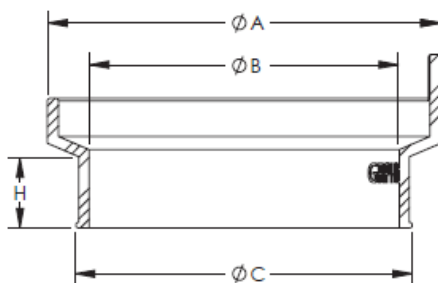
PULL-FIT TABBED PLUG

P/N RPI-1978-B

3" TABBED PLUG



RPI-1978-B 3" Tabbed Plugs protect inner threads on 3" Pipe during paint-baking, electroplating, powder coating, chrome plating and shot blasting. The Pull-Fit tab allows for quick removal. Made from high temperature paint-resistant silicone these tabbed plugs work in temperatures as high as 450F. Paint pops off with a twist of the plug allowing for repeated use.



Dimensional Data

A – Upper Outside Diameter	3.18"
B – Upper Inside Diameter	2.934"
C – Lower Outside Diameter	2.90"
H – Thread Coverage	0.52"

Free Sample Available on Request

817-304-3378

Call or email for quote

grpi@hughes.net

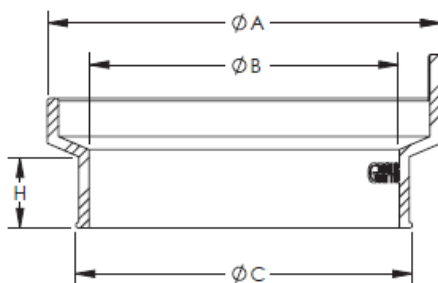
PULL-FIT TABBED PLUG

P/N RPI-3016

4" TABBED FITTING PLUG



RPI-3016 4" Tabbed Plugs protect inner threads on 4" fitting during paint-baking, electroplating, powder coating, chrome plating and shot blasting. Thread coverage is .314". The Pull-Fit tab allows for quick removal. Made from high temperature paint-resistant silicone these tabbed plugs work in temperatures as high as 450F. Paint pops off with a twist of the plug allowing for repeated use.



Dimensional Data

A – Upper Outside Diameter	5.026"
B – Upper Inside Diameter	4.25"
C – Lower Outside Diameter	4..306"
H – Thread Coverage	0.314"

Free Sample Available on Request

817-304-3378

Call or email for quote

grpi@hughes.net

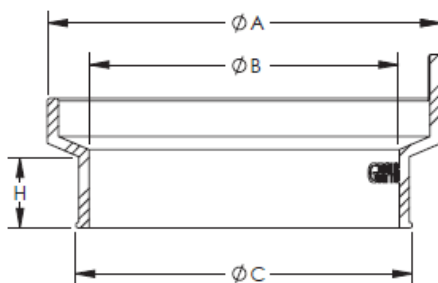
PULL-FIT TABBED PLUG

P/N RPI-2935-1

4" TABBED COUPLING PLUG



RPI-2935-1 4" Tabbed Plugs protect inner threads on 4" coupling during paint-baking, electroplating, powder coating, chrome plating and shot blasting. Thread coverage is .814". The Pull-Fit tab allows for quick removal. Made from high temperature paint-resistant silicone these tabbed plugs work in temperatures as high as 450F. Paint pops off with a twist of the plug allowing for repeated use.



Dimensional Data

A – Upper Outside Diameter	4.50"
B – Upper Inside Diameter	4.25"
C – Lower Outside Diameter	3.85"
H – Thread Coverage	0.814"

Free Sample Available on Request

817-304-3378

Call or email for quote

grpi@hughes.net

PULL-FIT TABBED PLUG

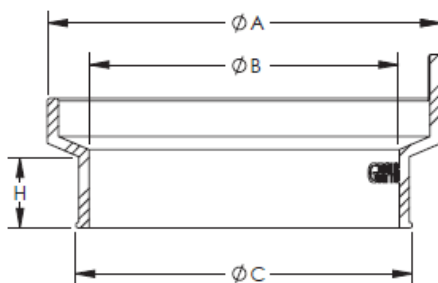
P/N RPI-2935-2

4" TABBED COUPLING PLUG

With 1.50" Thread Coverage



RPI-2935-2 4" Tabbed Plugs protect inner threads on 4" coupling during paint-baking, electroplating, powder coating, chrome plating and shot blasting. Thread coverage is 2.314". The Pull-Fit tab allows for quick removal. Made from high temperature paint-resistant silicone these tabbed plugs work in temperatures as high as 450F. Paint pops off with a twist of the plug allowing for repeated use.



Dimensional Data

A – Upper Outside Diameter	5.026"
B – Upper Inside Diameter	4.25"
C – Lower Outside Diameter	4.38"
H – Thread Coverage	1.50"

Free Sample Available on Request

817-304-3378

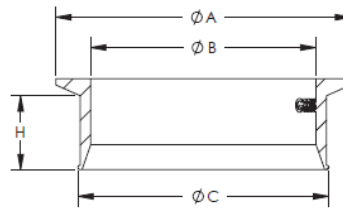
Call or email for quote

grpi@hughes.net



PUSH-FIT COLLARED PLUG

Collared Plugs protect inner threads and pipe face during paint-baking, electroplating, powder coating, chrome plating and shot blasting. The Push-Fit tab allows for quick removal. Made from high temperature paint-resistant silicone these tabbed plugs work in temperatures as high as 450F. Paint pops off with a twist of the plug allowing for repeated use. A “feathered” feature prevents paint buildup.



P/N	Description	A - Upper Outside Diameter	B - Upper Inside Diameter	C - Lower Outside Diameter	H – Thread Coverage
RPI-1978-F	Collared 1"	1.70"	.900"	1.27"	.600"
RPI-1978-I	Collared 1" Feathered	1.71"	.900"	1.27"	.314"
RPI-1978-CF	Collared 2" Feathered	2.71"	1.80"	2.20"	.50"
RPI-1978-G	Collared 3"	3.90"	2.89"	3.46"	1.00"
RPI-1978-H	Collared 4"	4.885"	3.875"	4.413"	1.25"
RPI-2977	Collared 4" Coupling	4.875"	3.875"	4.350"	.715"
RPI-3052	Collared 3.5" Coupling	4.240"	3.240"	3.610"	1.064"

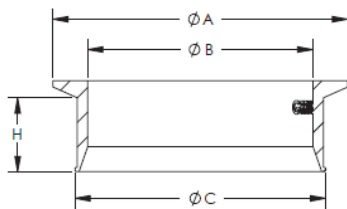
PUSH-FIT COLLARED PLUG

P/N RPI-1978-F

1" COLLARED PLUG



RPI-1978-F Collared Plug protects inner threads and pipe face during paint-baking, electroplating, powder coating, chrome plating and shot blasting. The Push-Fit tab allows for quick removal. Made from high temperature paint-resistant silicone these tabbed plugs work in temperatures as high as 450F. Paint pops off with a twist of the plug allowing for repeated use.



Dimensional Data

A – Upper Outside Diameter	1.70"
B – Upper Inside Diameter	0.90"
C – Lower Outside Diameter	1.27"
H – Thread Coverage	0.60"

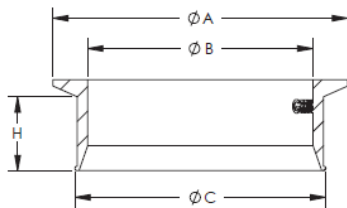
Free Sample Available on Request
817-304-3378

Call or email for quote
grpi@hughes.net

PUSH-FIT COLLARED PLUG P/N RPI-1978-I 1" COLLARED PLUG FEATHERED



RPI-1978-I Collared Plug protects inner threads and pipe face during paint-baking, electroplating, powder coating, chrome plating and shot blasting. The feathered feature prevents paint buildup. The Push-Fit tab allows for quick removal. Made from high temperature paint-resistant silicone these tabbed plugs work in temperatures as high as 450F. Paint pops off with a twist of the plug allowing for repeated use.



Dimensional Data

A – Upper Outside Diameter	1.700"
B – Upper Inside Diameter	0.900"
C – Lower Outside Diameter	1.270"
H – Thread Coverage	0.314"

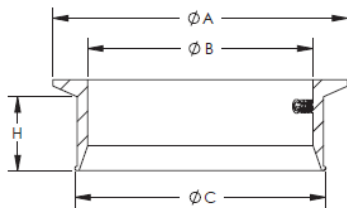
**Free Sample Available on Request
817-304-3378**

**Call or email for quote
grpi@hughes.net**

PUSH-FIT COLLARED PLUG P/N RPI-1978-CF 2" COLLARED PLUG FEATHERED



RPI-1978- CF Collared Plug protects inner threads and pipe face during paint-baking, electroplating, powder coating, chrome plating and shot blasting. The feathered feature prevents paint buildup. The Push-Fit tab allows for quick removal. Made from high temperature paint-resistant silicone these tabbed plugs work in temperatures as high as 450F. Paint pops off with a twist of the plug allowing for repeated use.



Dimensional Data

A – Upper Outside Diameter	2.71"
B – Upper Inside Diameter	1.80"
C – Lower Outside Diameter	2.20"
H – Thread Coverage	0.50"

Free Sample Available on Request

817-304-3378

Call or email for quote

grpi@hughes.net

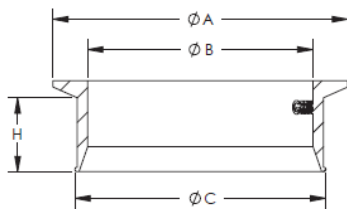
PUSH-FIT COLLARED PLUG

P/N RPI-1978-G

3" COLLARED PLUG



RPI-1978-G Collared Plug protects inner threads and pipe face during paint-baking, electroplating, powder coating, chrome plating and shot blasting. The Push-Fit tab allows for quick removal. Made from high temperature paint-resistant silicone these tabbed plugs work in temperatures as high as 450F. Paint pops off with a twist of the plug allowing for repeated use.



Dimensional Data

A – Upper Outside Diameter	3.90"
B – Upper Inside Diameter	2.89"
C – Lower Outside Diameter	3.46"
H – Thread Coverage	1.00"

Free Sample Available on Request

817-304-3378

Call or email for quote

grpi@hughes.net

PUSH-FIT COLLARED PLUG

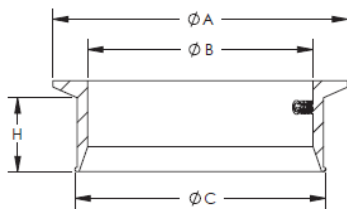
P/N RPI-3052

3.5" COLLARED PLUG -

COUPLING



RPI-3052 Collared Plug protects inner threads and pipe face during paint-baking, electroplating, powder coating, chrome plating and shot blasting. The Push-Fit tab allows for quick removal. Made from high temperature paint-resistant silicone these tabbed plugs work in temperatures as high as 450F. Paint pops off with a twist of the plug allowing for repeated use.



Dimensional Data

A – Upper Outside Diameter	4.240"
B – Upper Inside Diameter	3.240"
C – Lower Outside Diameter	3.610"
H – Thread Coverage	1.064"

Free Sample Available on Request

817-304-3378

Call or email for quote

grpi@hughes.net

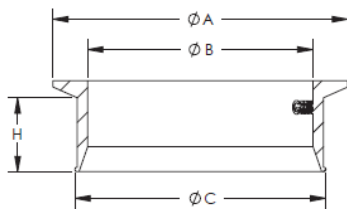
PUSH-FIT COLLARED PLUG

P/N RPI-1978-H

4" COLLARED PLUG



RPI-1978-H Collared Plug protects inner threads and pipe face during paint-baking, electroplating, powder coating, chrome plating and shot blasting. The Push-Fit tab allows for quick removal. Made from high temperature paint-resistant silicone these tabbed plugs work in temperatures as high as 450F. Paint pops off with a twist of the plug allowing for repeated use.



Dimensional Data

A – Upper Outside Diameter	4.885"
B – Upper Inside Diameter	3.875"
C – Lower Outside Diameter	4.413"
H – Thread Coverage	1.250"

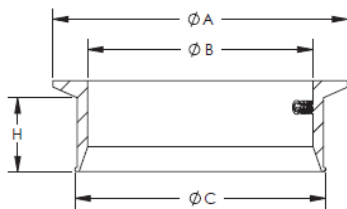
Free Sample Available on Request
817-304-3378

Call or email for quote
grpi@hughes.net

PUSH-FIT COLLARED PLUG P/N RPI-2977 4" COLLARED PLUG - COUPLING



RPI-2977 Collared Plug protects inner threads and pipe face during paint-baking, electroplating, powder coating, chrome plating and shot blasting. The Push-Fit tab allows for quick removal. Made from high temperature paint-resistant silicone these tabbed plugs work in temperatures as high as 450F. Paint pops off with a twist of the plug allowing for repeated use.



Dimensional Data

A – Upper Outside Diameter 4.875"
B – Upper Inside Diameter 3.875"
C – Lower Outside Diameter 4.350"
H – Thread Coverage .715"

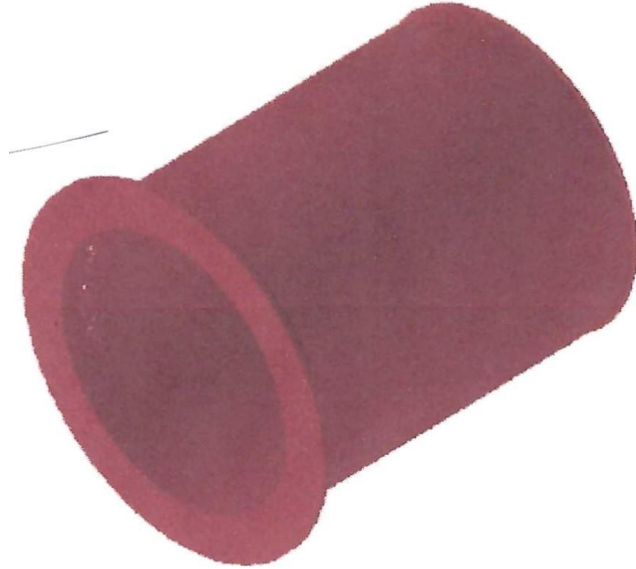
Free Sample Available on Request

817-304-3378

Call or email for quote

grpi@hughes.net

ZAP-LOCK THREAD PROTECTORS



Zip-Lock Thread Protectors protect inner threads application of Tube-Kote Internal Coatings. The Push-Fit tab allows for quick removal. Made from high temperature paint-resistant silicone plugs work in temperatures as high as 450F. Paint pops off with a twist of the plug allowing for repeated use. These plugs eliminate the need for taping and allows accuracy and repeatability in required paint coverage.

P/N	Lower Outside Diameter	Upper Inner Diameter	Thread Coverage
Zap Lock 4"	4.445"	3.875"	5.250"



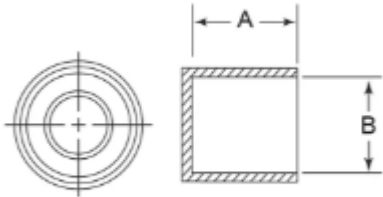
6" & 8" UNDER DEVELOPMENT

OPEN-END PIPE THREAD PROTECTORS 2", 3" and 4"



Open-End Pipe Thread Protectors help protect external threads during storage and shipping. These open-ended protectors can also be used to protect threads during painting (low heat). Made from Low Density Polyethylene (LDPE) resistant to temperatures from -50 degrees C to +60 degrees C. UV Stabilized – One Piece Construction – Injection Molded – Internal Ribs provide tight fit.

**Global Resource Products Stock is Red –
Other Colors available with Custom Quote
Other Sizes Available with Custom Quote**



Part	Description	Qty Per Box	Pieces Per Pallet	(A) Height	(B) Inside Diameter
2" Open End	2" OE	500	21000	1.245"	2.38"
3" Open End	3" OE	200	8000	1.690"	3.53"
4" Open End	4" OE	100	3375	1.815"	4.53"

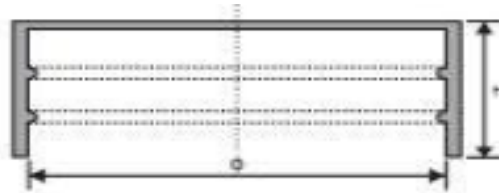
Free Sample Available on Request Call or email for quote
817-304-3378 grpi@hughes.net

CLOSED-END PIPE THREAD PROTECTORS (Pipe End Plug)



Closed-End Pipe Thread Protectors help protect external threads during storage and shipping. These closed end protectors protect from contamination from dust, debris and critters. Made from Low Density Polyethylene (LDPE) Resistant to temperatures from -50 degrees C to +60 degrees C. UV Stabilized – One Piece Construction – Injection Molded – Internal Ribs provide tight fit and release pressure buildup

Global Resource Stock Color Blue



Part	Description	Qty Per Box	Pieces Per Pallet	Inside Diameter	(H) Height
QMG-270-6	6" CE	250	1000	163.3mm (6.63")	60mm (2.36")
QMG-270-8	8" CE	190	760	219.1mm (8.63")	60mm (2.36")
QMG-270-10	10" CE	120	480	273mm (10.75")	60mm (2.36")
QMG-270-12	12" CE	85	340	323.9mm (12.75")	60mm (2.36")

Free Sample Available on Request

Call or email for quote

817-304-3378

grpi@hughes.net

Available Options

Sizes 1/8" – 78" available with custom quote

Alternate Lip Sizes Available with custom quote

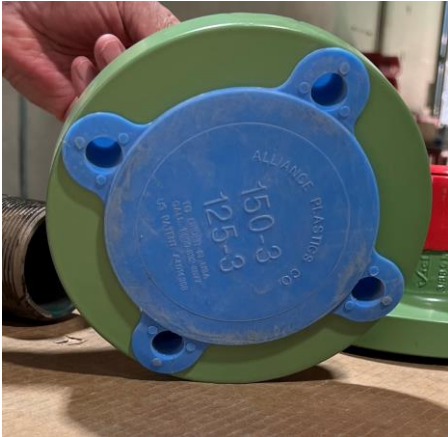


Alternate Colors Available with Custom Quote

FLANGE GASKET PROTECTORS

ANSI Stud Hole Fitting Flange Protectors

Sizes 2", 3", 4", 6", 8", 10" (150#)



Flange Gasket Protectors (ANSI Stud Hole Fittings Flange Protectors) are suitable for ASA/ANSI/B51560 Flanges. Quick Fitting. Simply insert plugs into the bolt holes. Will not tear or crack. Weather and Petroleum Resistant. Made from Low Density Polyethylene (LDPE) resistant to temperatures from -50 degrees C to +60 degrees C. UV Stabilized – One Piece Construction – Injection Molded –

Global Resource Products stock - Color Blue 150 lb.

Standards: GB, GOST, DIN

Available Options with Custom Quote

Other Sizes Available: 1/2" to 30"

Other Pressure (Lbs) Available – 300#, 600#, 900#, 1500#, 2500#



Alternate Colors Available with Custom Quote

Free Sample Available on Request

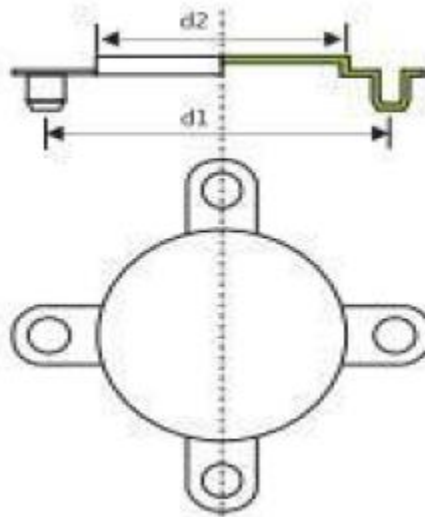
817-304-3378

Call or email for quote

grpi@hughes.net

FLANGE GASKET PROTECTORS

ANSI Stud Hole Fitting Flange Protectors



Part	Description	Qty Per Box	Pieces Per Pallet	D1	D2	Hole
QMG-570-2	2" Flange	3000	12000	120.7mm (4.75")	99mm (3.90")	19.1mm (.75")
QMG-570-3	3" Flange	2000	8000	152.4mm (6")	129mm (5.07")	19.1mm (.75")
QMG-570-4	4" Flange	1500	6000	190.5mm (7.5")	168mm (6.61")	19.1mm (.75")
QMG-570-6	6" Flange	900	3600	241.3mm (9.5")	220mm (8.66")	22.4mm (.88")
QMG-570-8	8" Flange	600	2400	298.5mm (11.75")	271mm (10.67")	22.4mm (.88")
QMG-570-10	10" Flange	400	1600	362mm (14.25")	325mm (12.80")	25.4mm (1.0")
QMG-570-12	12" Flange	200	800	431.8mm (17")	388mm (15.28")	25.4mm (1.0")

Free Sample Available on Request

Call or email for quote

817-304-3378

grpi@hughes.net

OTHER MODELS PIPE-VALVE END PROTECTION



Part Number	Description	Found on Page
QMG-230	PE Gas Pipe Plugs	26
QMG-280	Pipe End Plug	26
QMG-290	Pipe End Plug	26
QMG-330	Z11 Threaded End Cover	27
QMG-350	Z61 Socket Weld End Cover	27
QMG-530	GB Stud Hole Fitting Flange Protectors	27
QMG-535	High-Face Stud Hole Fitting Flange Protectors	28
OMG-577	JIS Stud Hole Fitting Flange Protectors	28
QMG-580	Hollow Stud Hole Fitting Flange Protectors	29
QMG-610	ANSI Outside Fitting Flange Protectors	29
QMG-611	ANSI Outside Fitting Flange Protectors	29
QMG-620	DIN Outside Fitting Flange Protectors	30
QMG-622	DIN Outside Fitting Flange Protectors	30
QMG-630	Valve Flange Face Protection Plugs	30
QMG-635	Flange Pipeline Protection Plugs	31
QMG-660	Push-In Full-Face Flange Protectors	31
QMG-685	Inner Ribs Flange Protector	32
QMG-770	Recessed Pipe Caps for Pipe Ends	32

MODEL NUMBER

QMG 230 PE Gas Pipe Plugs

Provides excellent protection from damage, dirt, moisture and corrosion during storage and transportation and laying. The plugs are easy fitting and removal.



Sizes: DN16 to DN1200

Material: LDPE, low density polyethylene.

Color:

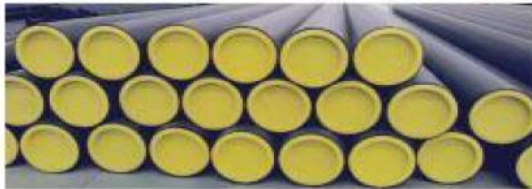
Custom-made: Resistant to temperatures from -50 degrees C to +60 degrees C.UV-stabilised.



MODEL NUMBER

QMG 280 Pipe End Plug

This unique finned design enables each plug to tight fit a large range of IDs of every Nominal Pipe Size up to 48 inch OD. Push-Fit design allows easy application of plug to pipes racked on the yard. Provides excellent protection from damage, dirt, moisture and corrosion during storage and transportation.



Sizes: Φ6mm to Φ1219mm

Material: LDPE, low density polyethylene

Color:

Custom-made: Resistant to temperatures from -50 degrees C to +60 degrees C.UV-stabilised.



MODEL NUMBER

QMG 290 Pipe End Plug

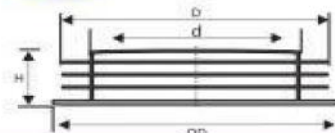
This unique finned design enables each plug to fit a large range of IDs of every Nominal Pipe Size up to 30 inch OD. Push-Fit design allows easy application of plug to pipes racked on the yard. Provides excellent protection from damage, dirt, moisture and corrosion during storage and transportation.

Sizes: Φ6mm to Φ762mm

Material: LDPE, low density polyethylene.

Color:

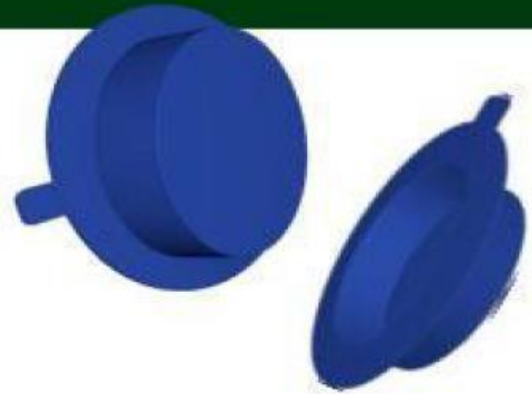
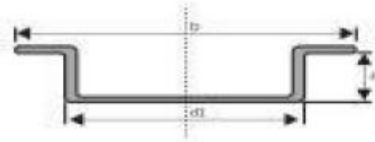
Custom-made: Resistant to temperatures from -50 degrees C to +60 degrees C.UV-stabilised.



MODEL NUMBER

QMG 330 Z11 Threaded End Cover

It is used for female threaded valves, pipe fittings and related components.



Sizes: 1/4" to 4"

Material: LDPE, low density polyethylene.

Color:

Pressures: 150LB to 2500LB

Custom-made: Resistant to temperatures from -50 degrees C to +60 degrees C. UV-stabilised.

MODEL NUMBER

QMG 350 Z61 Socket Weld End Cover

It is used for female threaded valves, pipe fittings and related components.

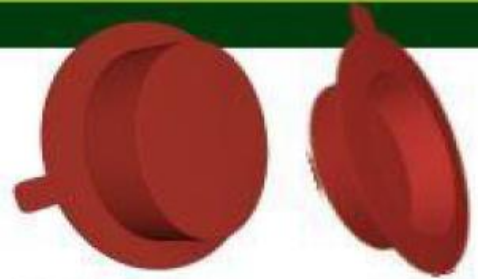
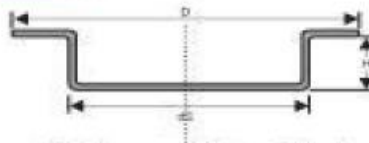
Sizes: DN15 to DN50

Material: LDPE, low density polyethylene.

Color:

Pressures: 150LB to 2500LB

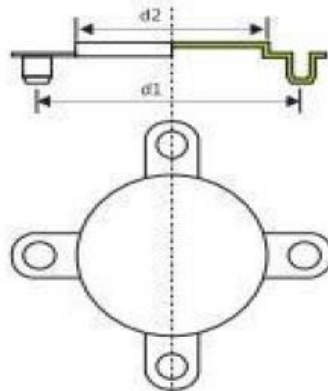
Custom-made: Resistant to temperatures from -50 degrees C to +60 degrees C. UV-stabilised.



MODEL NUMBER

QMG 530 GB Stud Hole Fitting Flange Protectors

Suitable for high-face flanges. Quick fitting. Simply insert plugs into the bolt holes. Will not tear or crack. Weather and petroleum resistant.



Sizes: 1/2" to 40"

Material: LDPE, low density polyethylene.

Color:

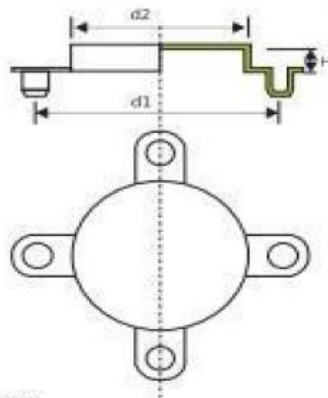
Standards: GB, GOST, DIN.

Custom-made: Resistant to temperatures from -50 degrees C to +60 degrees C. UV-stabilised.

MODEL NUMBER

QMG 535 High Pressure Stud Hole Fitting Flange Protectors

It is used for PTFE flange, pipeline, pipe fitting and related components.



Sizes: DN15 to DN600

Material: LDPE, low density polyethylene.

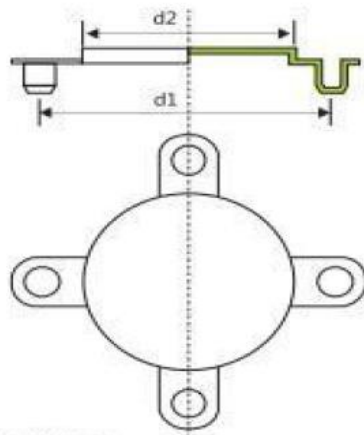
Color:

Custom-made: Resistant to temperatures from -50 degrees C to +60 degrees C. UV-stabilised.

MODEL NUMBER

QMG 577 JIS Stud Hole Fitting Flange Protectors

Suitable for JIS flanges.
Quick fitting. Simply insert plugs into the bolt holes.
Will not tear or crack. Weather and petroleum resistant.



Sizes: 10A to 300A

Material: LDPE, low density polyethylene.

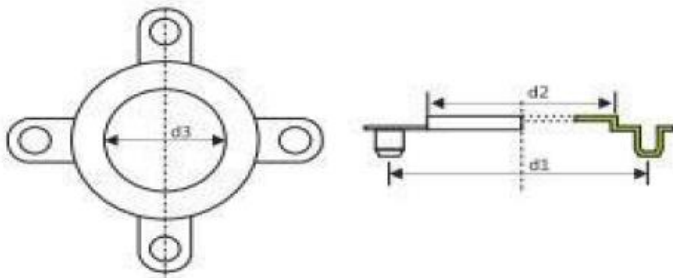
Color:

Custom-made: Resistant to temperatures from -50 degrees C to +60 degrees C. UV-stabilised

MODEL NUMBER

QMG 580 Hollow Stud Hole Fitting Flange Protectors

Quick fitting. Simply insert plugs into the bolt holes. Protect waterplane of flange.



Sizes: 2" to 12"

Material: LDPE, low density polyethylene.

Color:

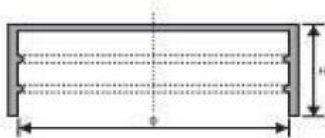
Standards: GB, GOST, DIN.

Custom-made: Resistant to temperatures from -50 degrees C to +60 degrees C. UV-stabilised.

MODEL NUMBER

QMG 610 ANSI Outside Fitting Flange Protectors

Just simply push over the flange diameter, Protect the face as well as the sides from damage during storage, transit and laying.



Sizes: 1/2" to 48"

Material: LDPE, low density polyethylene.

Color:

Pressures: 150LB to 2500LB

Custom-made: Resistant to temperatures from -50 degrees C to +60 degrees C. UV-stabilised.

MODEL NUMBER

QMG 611 ANSI Outside Fitting Flange Protectors

Pushes on to cover the entire flange and protect the face and sides. Ideal for coated and conical bore flanges.



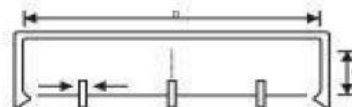
Sizes: 1/2" to 24"

Material: LDPE, low-density polyethylene.

Color:

Pressures: 150LB to 2500LB

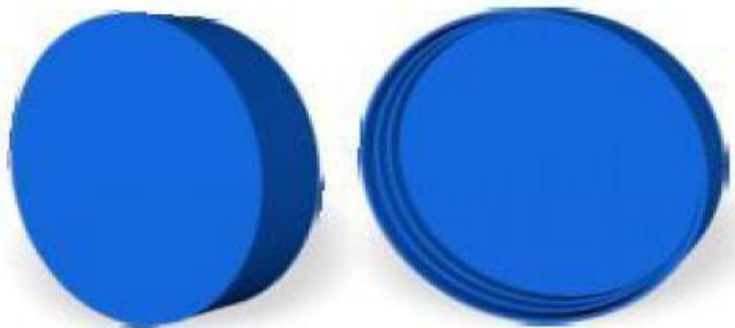
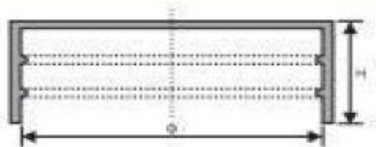
Custom-made: Resistant to temperatures from -50 degrees C to +60 degrees C. UV-stabilised



MODEL NUMBER

QMG 620 DIN Outside Fitting Flange Protectors

Just simply push over the flange diameter, Protect the face as well as the sides from damage during storage, transit and laying.



Sizes: DN10 to DN1000

Material: LDPE, low density polyethylene.

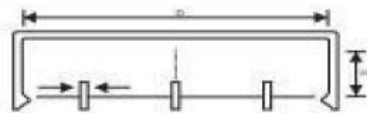
Color:

Custom-made: Resistant to temperatures from -50 degrees C to +60 degrees C.UV-stabilised.

MODEL NUMBER

QMG 622 DIN Outside Fitting Flange Protectors

Pushes on to cover the entire flange and protect the face and sides. Ideal for coated and conical bore flanges.



Sizes: DN15 to DN300

Material: LDPE, low-density polyethylene.

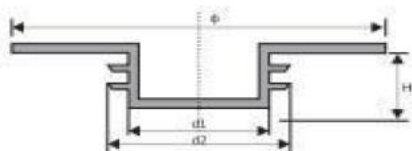
Color:

Custom-made: Resistant to temperatures from -50 degrees C to +60 degrees C.UV-stabilised

MODEL NUMBER

QMG 630 Valve Flange Face Protection Plugs

Provides cushioned protection for flange face.



Sizes: 1/2" to 40"

Material: LDPE, low density polyethylene.

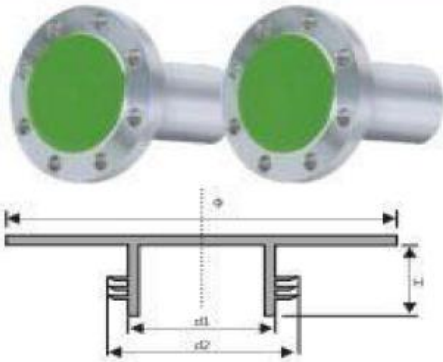
Color:

Custom-made: Marine standard, ISO, GB, API/ANSI, DIN, JIS, BS, NF

Custom-made: Resistant to temperatures from -50 degrees C to +60 degrees C.UV-stabilised.

QMG 635 Flange Pipeline Protection Plugs

Provide tight fit, protect flange and pipeline from cleaning and sand blasting.



Sizes: DN15 to DN600

Material: LDPE, low density polyethylene.

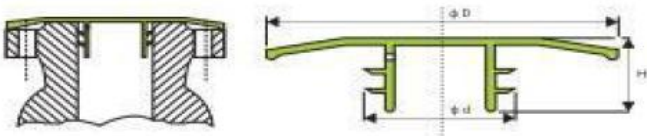
Color: 

Custom-made: Resistant to temperatures from -50 degrees C to +60 degrees C. UV-stabilised.



QMG 660 Push-In Full-Face Flange Protectors

Suitable for both imperial (ANSI) and metric (DIN) flanges to specifications DN 2627 - 2638, 150, BS 5504 and ANSI B16.5. The most versatile and universal flange protector on the market. Its unique design allows the protection of an array of different size flanges, as well as other various classifications of flanges, with one part.



Sizes: DN15 to DN500

Material: LDPE, low density polyethylene.

Color: 

Standards: GB, GOST, DIN.

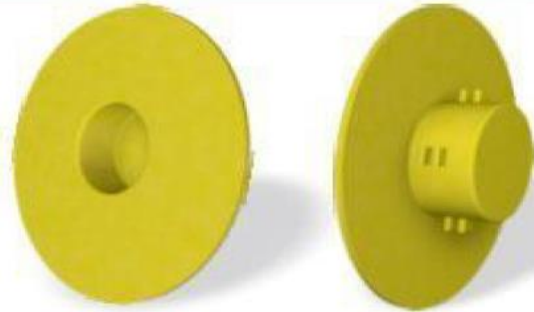
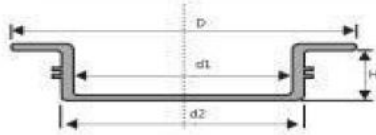
Custom-made: Resistant to temperatures from -50 degrees C to +60 degrees C. UV-stabilised.



MODEL NUMBER

QMG 685 Inner Ribs Flange Protector

It is used for protecting valves and related components.



Sizes: DN15 to DN600.

Material: LDPE, low density polyethylene.

Color: 

Pressures: 150LB to 2500LB

Custom-made: Resistant to temperatures from -50 degrees C to +60 degrees C.UV-stabilised.

MODEL NUMBER

QMG 770 Recessed Pipe Caps for Pipe Ends :

Accommodate crane hook handling.
Protect pipe bevels and internal walls
from corrosion and damage.
Accept crane hooks for moving pipes
during storage, transit and laying.
Accommodate crane hook handling.



Sizes: 6" to 40"

Material: LDPE, low density polyethylene.

Color: 

Custom-made: Resistant to temperatures from -30 degrees C to +60 degrees C.UV-stabilised.

